

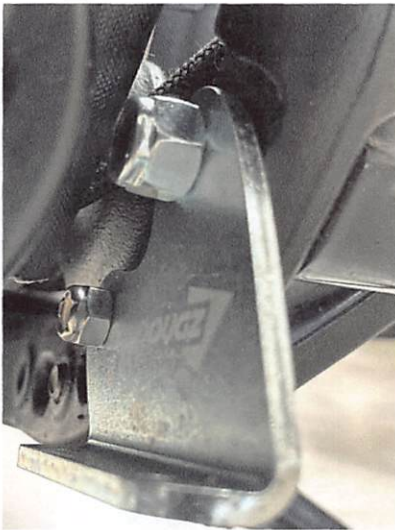
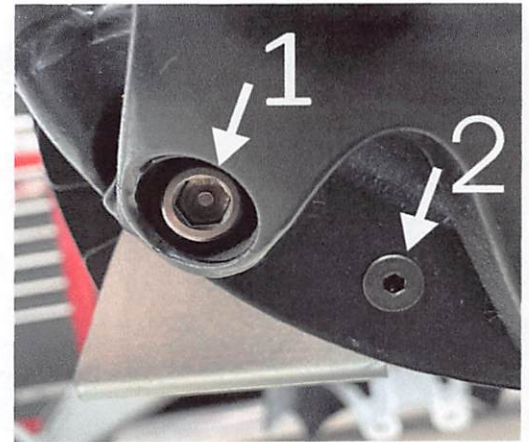
## M8 Softail chin spoiler installation instructions



The chin spoiler is shipped with the mounting bolts in their proper location for reference during final assembly

Remove the front forward control mount Torx bolts and replace them with the longer 3/8-16 Allen bolts (1) we provided. The reason for the longer Allen bolts is explained in the next step.

The 1/4-20 Countersunk bolts (2) will be installed through the - normally unoccupied - holes in the chassis. If you have a crash bar installed and it uses those two - normally unoccupied - holes to fasten the crash bar in place, you may need to drill the smaller - unthreaded - chin mount holes to a larger size to accommodate the larger bolts used to fasten the crash bar in place.



In the image to the left you see the chin mount fastened to the inside surface of the chassis, using the included 3/8-16 nylock nut, which is now threaded onto the longer Allen bolt from the previous step. Also, you see the 1/4-20 nylock nut threaded onto the Countersunk bolt mentioned in the previous step.

In the image to the right you see how both chin mounts should look once installed and ready to attach the chin spoiler to the mounts.



Now install the chin spoiler using the provided 1/4-20 buttonhead bolts and washers - applying Loctite 243 (BLUE) - to the threads of those 4 buttonhead bolts. **DO NOT SKIP USING THE LOCTITE!!!** Please feel free to email [DOUG@DOUGZ.COM](mailto:DOUG@DOUGZ.COM) if you have any questions during installation.



**Made in Onalaska, Wisconsin**  
**DOUG@DOUGZ.COM**  
**1.608.783.3684**